

Annual Report



Diller-Odell Public Schools
Striving for Successful 21st Century Learners

Purpose of this Report

The annual report is submitted to the patrons of Diller-Odell Public Schools in accordance with the accreditation rules of the Nebraska Department of Education. The annual report provides patrons with information regarding our school demographics, student achievement, and financial information. This report highlights some of our challenges and accomplishments in our district.

State of the Schools Report

More information about Diller-Odell Public Schools 2012-2013 academic year can be found on the State of the Schools Report at <http://reportcard.education.ne.gov>

- 1) Click on **District** in the right hand corner.
- 2) Type in Diller-Odell and click on **Search**.
- 3) Click on **DILLER-ODELL PUBLIC SCHOOLS** (In red font color).
- 4) Informational choices are on the top tabs of the page in blue.

District Mission Statement

Striving for Successful 21st Century Learners

Board of Education

Chad Lottman
Jill Scheele

Dean Engelman
Paul Kostal

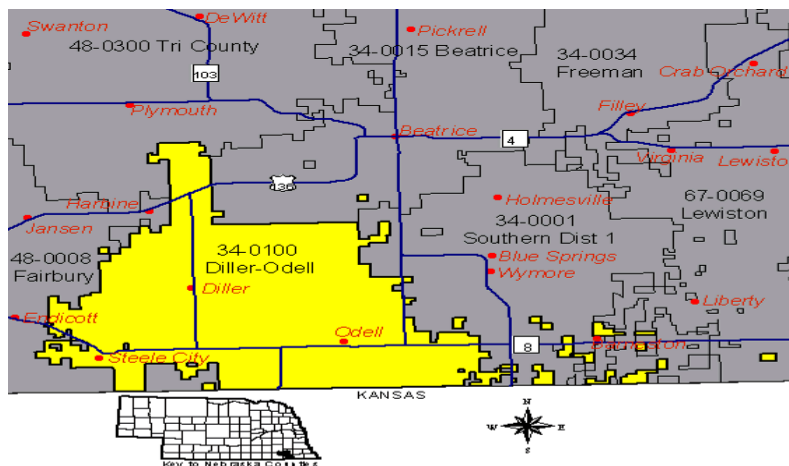
Gary Stohs
Toni Landerberger

School Improvement Goals

- All students will improve proficiency in reading comprehension.
- All students will improve their problem solving capacity by improving proficiency in number sense, algebraic concepts, geometry and measurement, and data analysis/probability.

Description of the District

Diller-Odell Public Schools is a consolidated district organized on April 2, 2000. The Diller and Odell communities are twelve miles apart and the district covers approximately 170 square miles in southern Gage and Jefferson Counties. Community members are dedicated to a quality education for their children. Twice patrons approved a levy override. Nearly 75% of receipts come from local taxes, and nearly 70% of the budget is appropriated for instructional use.



Certified Staff

Faculty Members	Education Level	Years Experience	Position
Mike Meyerle	Ed.S.	23	Superintendent
Chris Prosocki	Ed.S.	6	PK-12 Principal
Rita Becker	M.A.	11	Guidance Counselor
Amy Coufal	M.A.	14	7-8 English Teacher/Technology
Beth Roelfs	M.A.	18	K-6 Special Education Teacher
Brandee Goosman	B.A.	5	Preschool/Special Education Teacher
Catherine Klecan	B.A.	24	K-12 Art Teacher
Cathy Lyons	B.A.	32	7-12 Special Education Teacher
Chris Schluter	B.A.	3	Health and P.E. Teacher
Corinna Vrbka	B.A.	3	Social Studies Teacher
Eric McMurray	B.A.	24	7-12 Math Teacher
Jan Liscom	B.A.	20	K-6 Music Teacher
Janel Hynek	B.A.	18	Fourth Grade Teacher
Janelle Gegg	M.A.	13	9-12 Spanish Teacher
Jeanne Skidmore	B.A.	25	First Grade Teacher
John Mohr	B.A.	16	7-12 Social Studies Teacher
Justin Larsen	B.A.	8	Fifth Grade Teacher
Kent Ropers	M.A.	28	7-12 Science Teacher
Lana Hemphill	B.A.	42	Second Grade Teacher
Lisa Bohling	B.A.	29	7-12 Business Teacher
Marilyn Hein	M.A.	14	7-12 Math Teacher
Pamela Jueneman	B.A.	1	9-12 English Teacher
Patty Heble	B.A.	17	Kindergarten Teacher
Ron Rickstrew	M.A.	33	Agriculture Education Teacher
Sharon Tegtmeier	B.A.	39	Title Teacher
Sheila Bargman	B.A.	15	Sixth Grade Teacher
Stacy Hennerberg	B.A.	22	Third Grade Teacher
Susan Meyer	B.A.	36	Media Specialist
Terry Arnold	M.A.	20	7-12 Science Teacher
Tiffany Schoenrock	B.A.	9	5-12 Band/Vocal Teacher

Classified Staff

Faculty Members	Position
Andrea Humphreys	Clerical Staff
Bill Behrends	Bus Driver
Carolyn Vitosh	Cook
Christinia Eickman	Bus Driver
Cindy Stohs	Paraprofessional
Dallas Stohs	Custodian
Dawn Ebeling	Clerical Staff
Dori Ropers	Paraprofessional
Dusty Duis	School Nurse
George Rempel	Bus Driver
Heather Malchow	Paraprofessional
Jennifer Wendland	Cook
Judith Krause	Paraprofessional
Keith Craig	Custodian
Marcia Duerksen	Paraprofessional
Marlene Wolken	Bus Driver
Phyllis Leseberg	Cook
Renee Hroch	Clerical Staff
Rick Wallinger	Bus Driver
Ronda Duis	Cook
Susan Lawton	Paraprofessional

Current Enrollment Figures

Compiled on November 12th, 2013			
Grade	Boys	Girls	Total
PK	13	13	26
K	9	9	18
1	8	7	15
2	13	8	21
3	8	5	13
4	8	8	16
5	6	4	10
6	4	12	16
Elementary	69	66	135
7	11	12	23
8	15	7	22
9	16	17	33
10	7	5	12
11	11	5	16
12	5	10	15
High School	65	56	121
District	134	122	256

Diller-Odell Student Profile 2012-2013 Academic Year

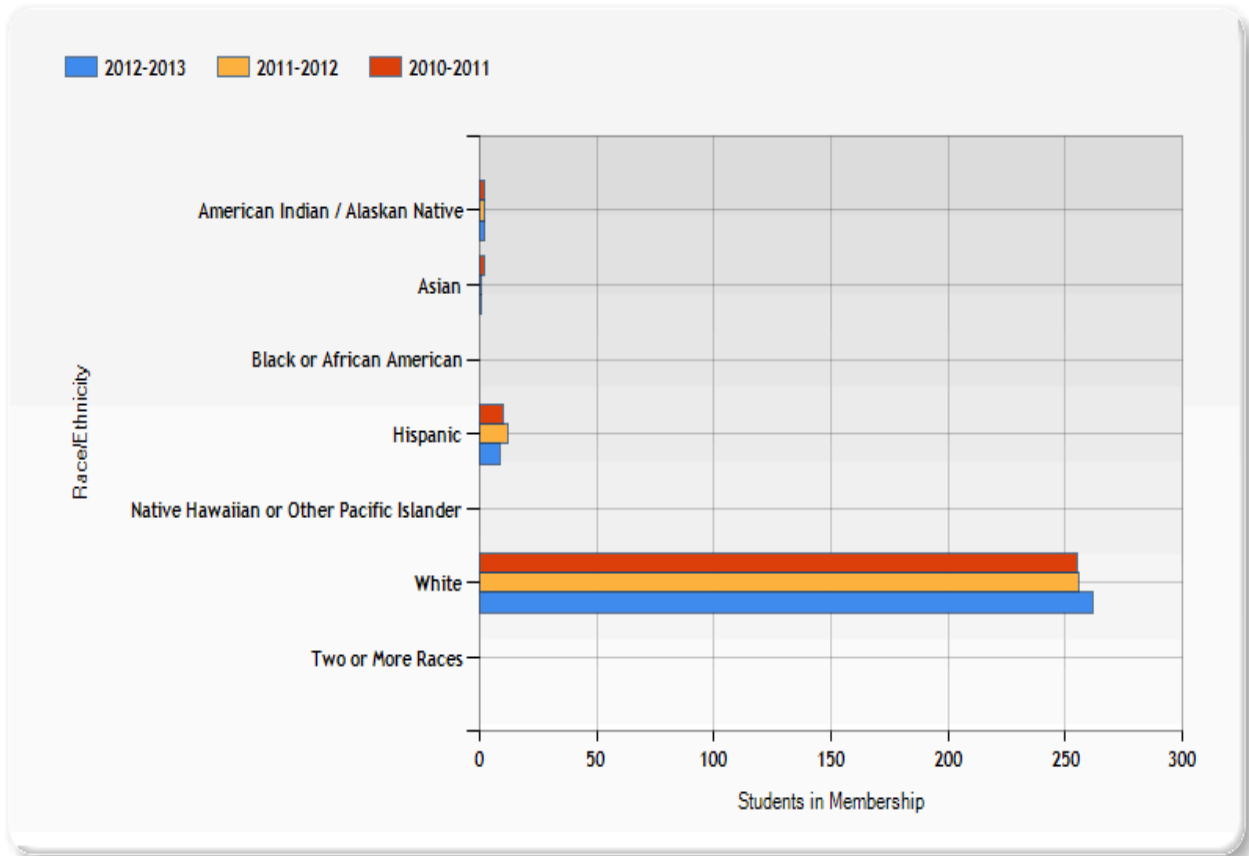
Students	Diller-Odell	State
Mobility Rate	6.02%	11.35%
Free/Reduced Priced Meals	29.93%	44.18%
English Language Learners (ELL)	N/A	5.96%
Special Education	13.50%	14.66%
ACT Composite Score	22.9	21.5

***Please Note: ACT Composite Score includes any student in grades 9-12 that took the ACT test.**

***Please Note: N/A = Indicate that the data has been masked to protect the identity of students using one the following criteria:**

- 1) Fewer than 10 students were reported in a group.
 - a) Fewer than 5 students were reported at a performance level.
- 2) All students were reported in a single group or performance category.

Student Membership by Race and Ethnicity 2012-2013 Academic Year



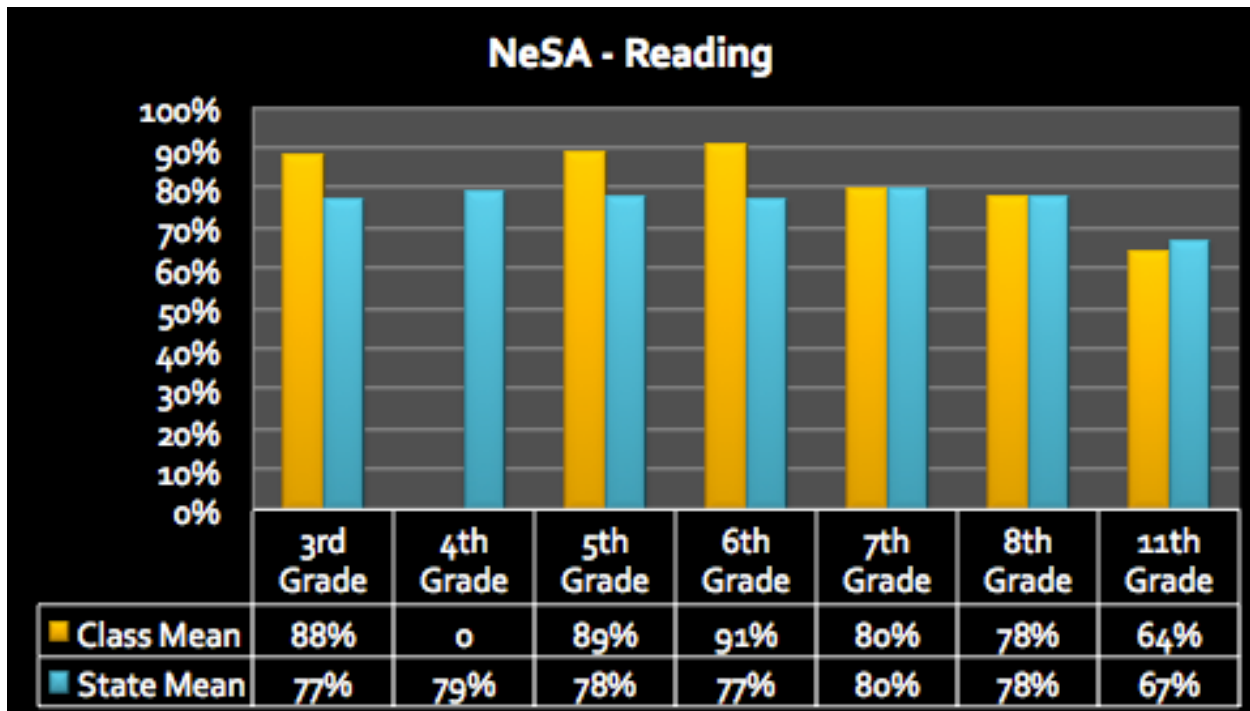
Years	American Indian/Alaskan Native	Asian	Black or African American	Hispanic	Native Hawaiian or Other Pacific Islander	White	Two or More Races
2010-2011	2	2	0	10	0	255	0
2011-2012	2	1	0	12	0	256	0
2012-2013	2	1	0	9	0	262	0

Nebraska State Accountability (NeSA)

The Nebraska State Accountability (NeSA) tests were developed specifically for Nebraska to provide teachers, students, and parents with an assessment of student progress in mastering basic skills based on Nebraska’s Academic Standards in reading, mathematics, science, and writing. The NeSA test is a criterion-referenced assessment that is given once a year to measure student performance towards the standards. The following table is a breakdown of the NeSA tests administered at each grade level.

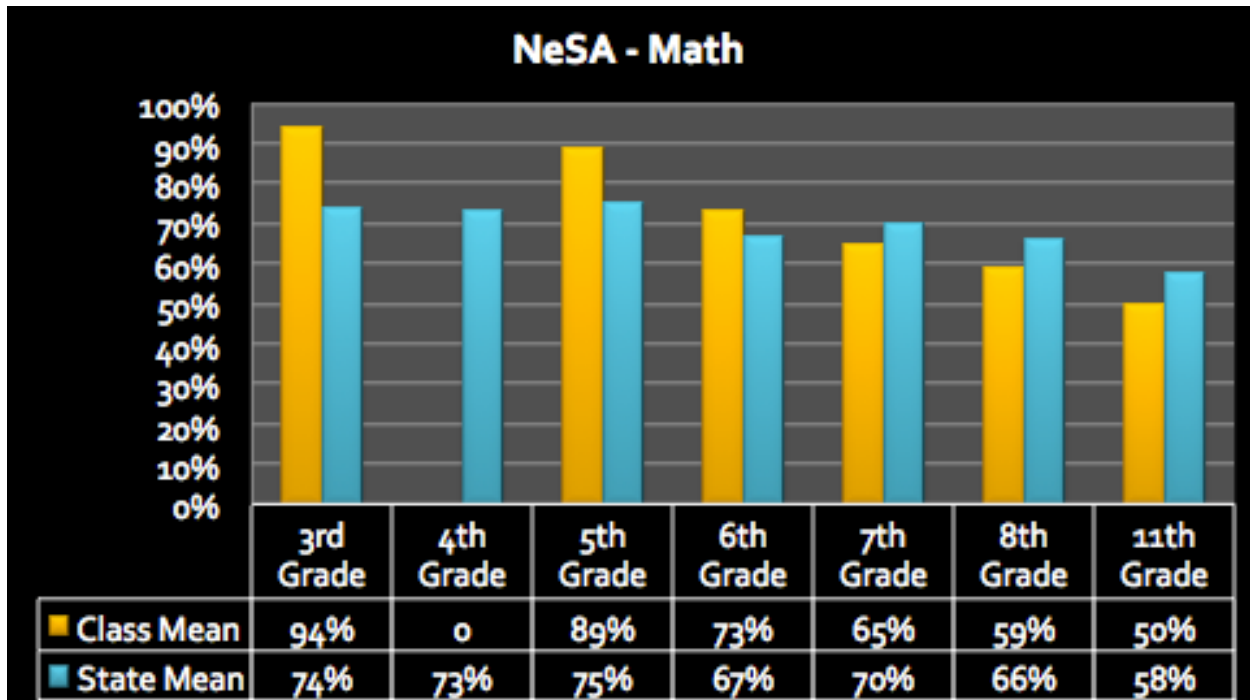
NeSA Assessment	Subject	Grades Administered
NeSA-R	Reading	3-8 & 11
NeSA-M	Math	3-8 & 11
NeSA-S	Science	5,8,11
NeSA-W	Writing	4,8,11

Nebraska State Accountability (NeSA) Percent Proficient By Grade/Subject Area 2012-2013 Academic Year



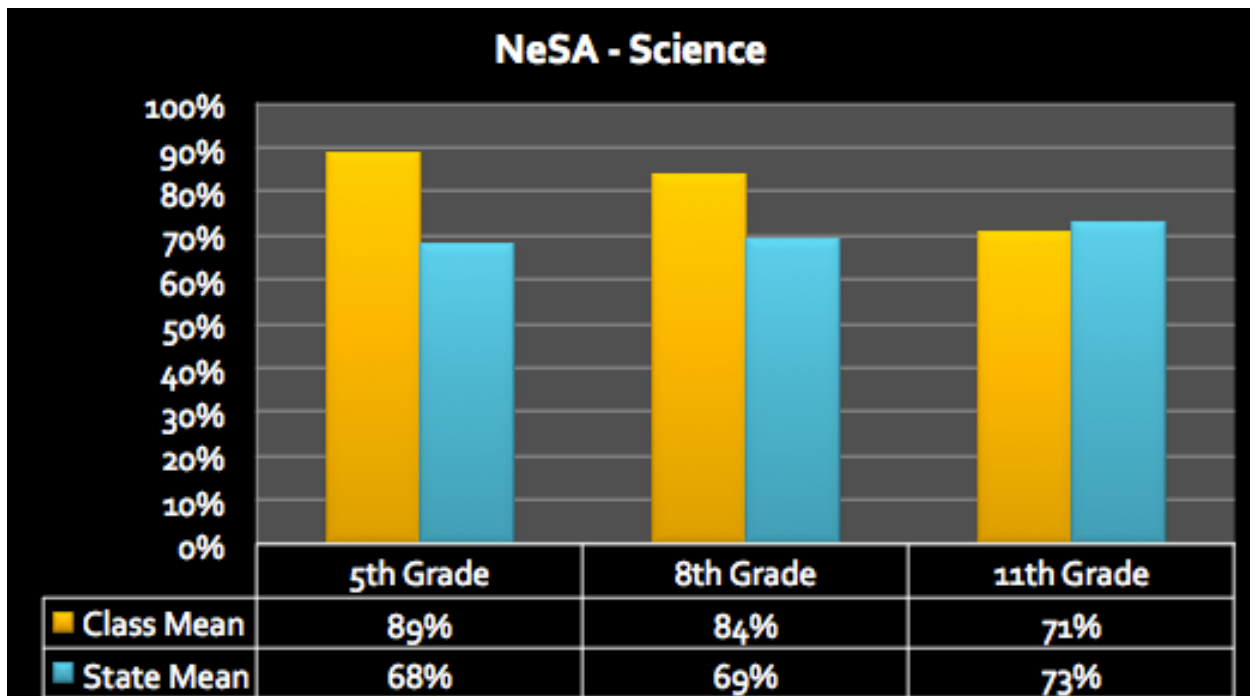
*Please Note: 0 = Indicate that the data has been masked to protect the identity of students using one the following criteria:

- 1) Fewer than 10 students were reported in a group.
 - a) Fewer than 5 students were reported at a performance level.
- 2) All students were reported in a single group or performance category.

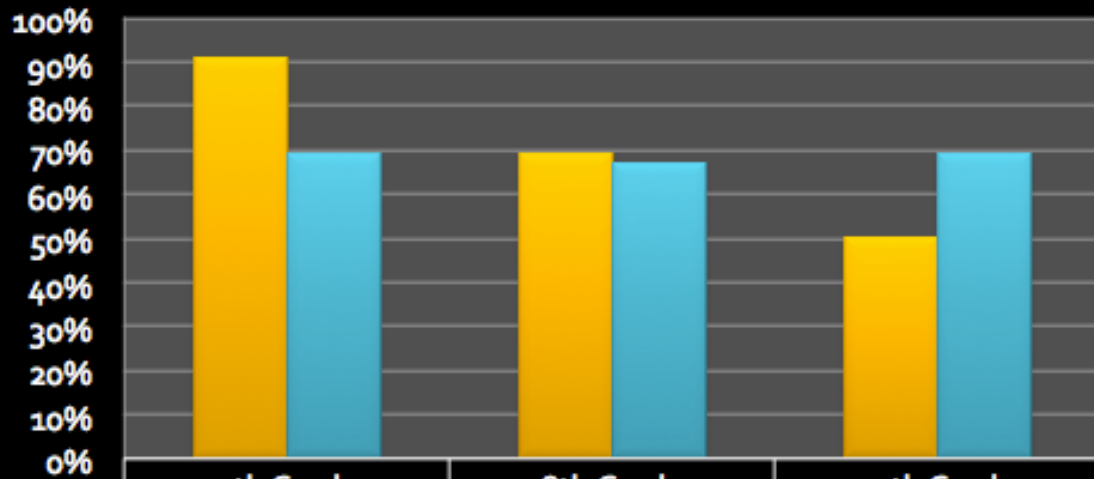


*Please Note: 0 = Indicate that the data has been masked to protect the identity of students using one the following criteria:

- 1) Fewer than 10 students were reported in a group.
 - a) Fewer than 5 students were reported at a performance level.
- 2) All students were reported in a single group or performance category.



NeSA - Writing



	4th Grade	8th Grade	11th Grade
■ Class Mean	91%	69%	50%
■ State Mean	69%	67%	69%

**Nebraska State Accountability (NeSA) Comparison
2012-2013 Academic Year**

School District	Subject	3rd	4th	5th	6th	7th	8th	11th
Diller-Odell	Reading	88%	N/A	89%	91%	80%	78%	64%
Beatrice	Reading	82%	82%	81%	85%	88%	89%	76%
Fairbury	Reading	65%	75%	74%	71%	85%	72%	89%
Freeman	Reading	83%	76%	88%	79%	94%	81%	65%
Tri County	Reading	65%	73%	73%	81%	82%	74%	59%
State Mean	Reading	77%	79%	78%	77%	80%	78%	67%
Diller-Odell	Math	94%	N/A	89%	73%	65%	59%	50%
Beatrice	Math	77%	75%	76%	80%	81%	82%	70%
Fairbury	Math	52%	79%	81%	65%	76%	71%	62%
Freeman	Math	80%	59%	79%	74%	75%	73%	58%
Tri County	Math	70%	91%	80%	81%	75%	61%	56%
State Mean	Math	74%	73%	75%	67%	70%	66%	58%
Diller-Odell	Science	NT	NT	89%	NT	NT	84%	71%
Beatrice	Science	NT	NT	72%	NT	NT	79%	71%
Fairbury	Science	NT	NT	81%	NT	NT	69%	91%
Freeman	Science	NT	NT	84%	NT	NT	85%	81%
Tri County	Science	NT	NT	83%	NT	NT	94%	78%
State Mean	Science	NT	NT	68%	NT	NT	69%	73%
Diller-Odell	Writing	NT	91%	NT	NT	NT	69%	50%
Beatrice	Writing	NT	69%	NT	NT	NT	71%	57%
Fairbury	Writing	NT	77%	NT	NT	NT	44%	55%
Freeman	Writing	NT	63%	NT	NT	NT	92%	84%
Tri County	Writing	NT	76%	NT	NT	NT	71%	85%
State Mean	Writing	NT	69%	NT	NT	NT	67%	69%

***Please Note: N/A = Indicate that the data has been masked to protect the identity of students using one the following criteria:**

- 1) Fewer than 10 students were reported in a group.
 - a) Fewer than 5 students were reported at a performance level.
- 2) All students were reported in a single group or performance category.

***Please Note: NT = Indicate that the students were Not Tested at certain grade levels.**

Nebraska Performance Accountability System (NePAS)

The Nebraska Performance Accountability System (NePAS) is a new accountability system that the Nebraska Department of Education uses to rank students based on their NeSA test results. The ranking are not given to individual grades, but they are based upon different grade-level bands. The grade-level bands reported through NePAS are elementary (Grades 3-5), middle (Grades 6-8), secondary (Grades 9-12), and a district summary where all grade-level bands are combined (Grades 3-12). The NeSA test results reported through NePAS are only one data source among many that Diller-Odell Public Schools uses to guide decision-making in our district.

District Summary (Grades 3-12) 2012-2013 Academic Year

Indicator Type	Indicator	District Results	State Results	Rank	# of Ranked Districts
Status	Average NeSA Reading	123.19	114.54	43	249
	Average NeSA Math	113.33	106.09	93	249
	Average NeSA Science	110.23	103.25	98	249
	Writing Status Not Displayed [^]				
Improvement from 2012 (Different Students)	Average NeSA Reading	3.63	3.96	128	248
	Average NeSA Math	-8.50	2.08	237	248
	Average NeSA Science	-3.08	3.32	207	248
	Writing Improvement Not Displayed [^]				
Growth since 2012 (Same Students)	NeSA Reading	3.61	4.70	138	248
	NeSA Math	-7.08	0.00	228	248
Graduation Rate	2013 Four-Year Cohort	98% or Above	88.41 %	1	226
	2011 Extended Six-Year Cohort	98% or Above	89.62 %	1	234
Participation	NeSA Reading	MET			
	NeSA Math	MET			
	NeSA Science	MET			
	NeSA Writing	MET			

[^] Students at grades 8 and 11 experienced formatting issues with the NeSA-Writing online test administration. While research into the score results does not indicate an effect on student results, it also does not assure there was no effect. Scores should be interpreted with caution and are not included in Nebraska Performance Accountability System [NePAS].

NePAS Terminology

Status is the average of the scale scores in each of four separate content areas: reading, mathematics, writing and science. Scores for all students tested in the grade range for the current year are included. Status can be thought of as a "snapshot" of the current achievement by grade, building, district and state.

Improvement (Cross-Sectional) will be calculated based on the difference between the average NeSA scale score for the current year and average scale score for the previous year in a grade. These are averages of different students each year. The average scale score is calculated as the mean of all scores from students tested in that year. Improvement is based on the performance of all students in the grades that are tested each year. The two groups of students being compared will be different because of the normal progression of students through the grades. For example, this year's fifth graders will be compared to last year's fifth graders and those fifth graders from last year will not be included in the current year's average because they have moved to the sixth grade.

Growth (Cohort) will be calculated in reading and mathematics by subtracting each student's scale score for the previous year from the current year scale score. The growth measure will be the average of these differences. Growth is based on tracking the scores of the same students from one year to the next. Only students who were tested in both years in the same school district will be included in the calculation, so if students move from one school district to another, they are not included in the calculations. For example, this year's fifth graders will be compared with last year's fourth graders. Note that the same scale score range is used at each grade level. Therefore a student who earns the same scale score two years in a row can be said to have achieved one year's growth. In other words, a student with a difference in scale score of zero has achieved the growth expected for a single year. Growth scores are not applicable to third grade or high school.

Participation will be calculated as percentage of enrolled students who take the NeSA assessment in grades tested. The target rate has been set at 95%.

Graduation Rate is calculated by following the students enrolled in grade 9 and calculating the percentage who have graduated after four and six years. The method to be used is the cohort four-year graduation rate defined by the US Department of Education. As data becomes available in 2013, the 6-year rate will be calculated as a two-year extension using the same method.

Business Rules that define the details of calculating all indicators will be taken from existing reports, e.g. State of the Schools or AYP, as appropriate, and include masking of groups with fewer than 10 to prevent issuance of personally identifiable information.

2013-2014 Budget Information

The 2013-2014 Budget of \$6,549,372, represents an increase of \$468,901 or a 7.71% increase from the 2012-2013 budget of \$6,080,471. The valuation of the district increased \$42,625,344 or 9.48% over the 2012 valuation of \$449,571,422.

2013-2014 Levy Comparison Information

	2009-2010	2010-2011	2011-2012	2012-2013	2013-2014
General	.861702	.786320	.783574	.687504	.685668
Special Building	.002313	.002208	.002027	.067404	.064029
Total	.864015	.788528	.785601	.754908	.749697

2013 Valuations

Gage County	\$261,063,838
Pawnee County	\$495,115
Jefferson County	\$230,637,813
<hr/> Total	<hr/> \$492,196,766

Please feel free to contact me with any questions that you might have about our annual report.

Christopher Prosocki
PK-12 Principal